

USING GEOSPATIAL PDFs


Geospatial PDFs are PDF files with geospatial data embedded within them. There are many [PDF readers](#), both free and commercial, which can read Geospatial PDFs. Below are tips for using Geospatial PDFs in the free **Adobe Acrobat Reader DC** software. Note that the tutorials below are written for the Windows operating system and Acrobat Reader DC version 2015.010.20056. These tutorials do not cover all Geospatial PDF functionality in Adobe products, but rather provide an introduction to these capabilities.

Tip: To use Adobe Reader, the PDF file should be on your computer. If you are trying to download a PDF but it opens in your Web browser, right-click the PDF file link and click to save to your computer. Your browser may also include a download button if you are currently viewing the PDF.

PANNING AND ZOOMING

You can navigate the map using Reader's standard navigation tools. To see all navigation tools, click View > Show/Hide > Toolbar Items > Show Select & Zoom Tools > Show All Select & Zoom Tools.

TOGGING MAP LAYER VISIBILITY

1. In the set of views on the left side of the window, click the **Layers** button .
2. Click the plus signs in the Layers pane to expand available map layers.
3. Click the eye next to a given layer to hide the layer.

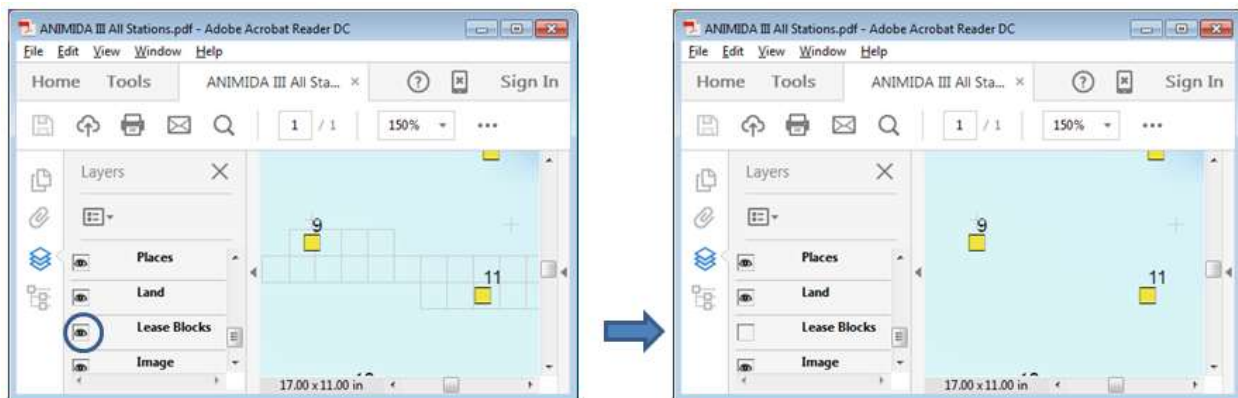


Figure 1: Setting Layer Visibility

USING THE MEASURE TOOLSET

Additional functionality is available via the Measure toolset. To enable the Measure toolset, click the Tools tab and then click Measure.

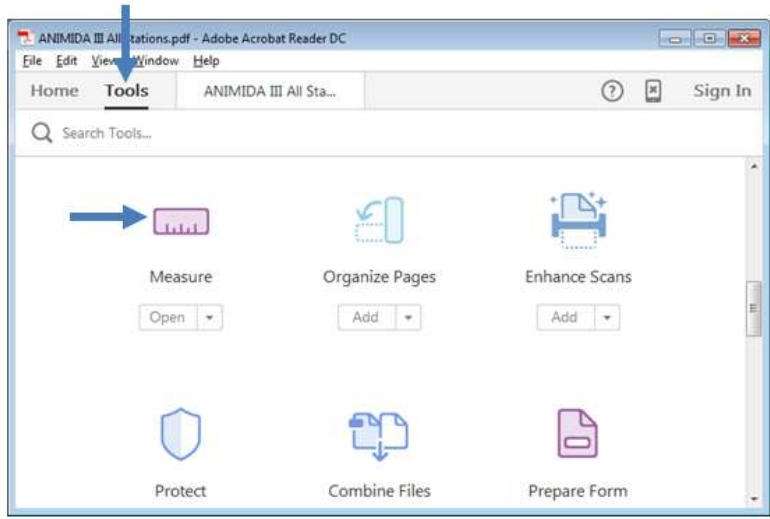


Figure 2: Enabling the Measure Toolset

You'll now notice three new tools. You can measure geodesic distances using the **Measuring Tool**. With the **Geospatial Location Tool**, you can hover your mouse in the map to see latitude and longitude coordinates.

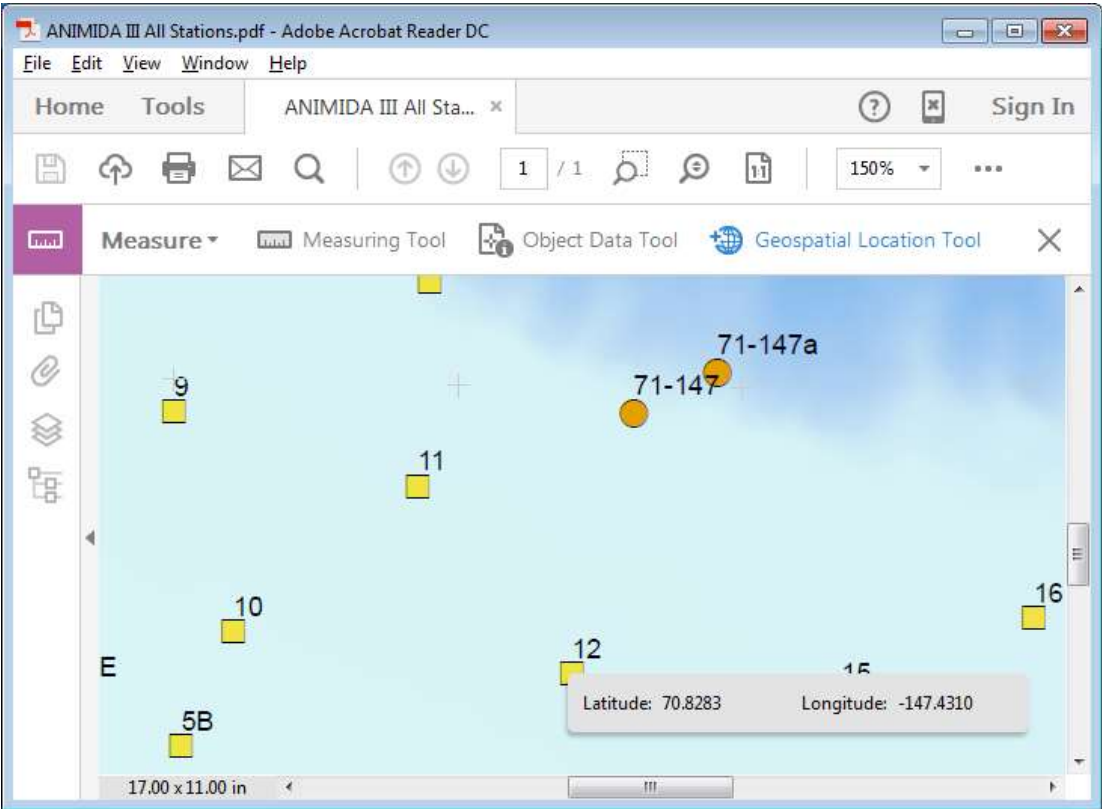



Figure 3: Viewing Geospatial Location

With the **Object Data Tool**, you can click a feature in the map to view its attributes. However, for performance reasons it's best to tell the software which map layer you want to query before using the tool. The recommended procedure is:

1. Click the **Model Tree** button .
2. Click the plus sign until you find the layer you want to query.
3. Click the desired layer to select it. Features in this layer will be highlighted with a red outline in the map.
4. Click the **Object Data Tool**.
5. Click one of the highlighted features in the map to select it. Its attributes will be shown at the bottom of the **Model Tree**.

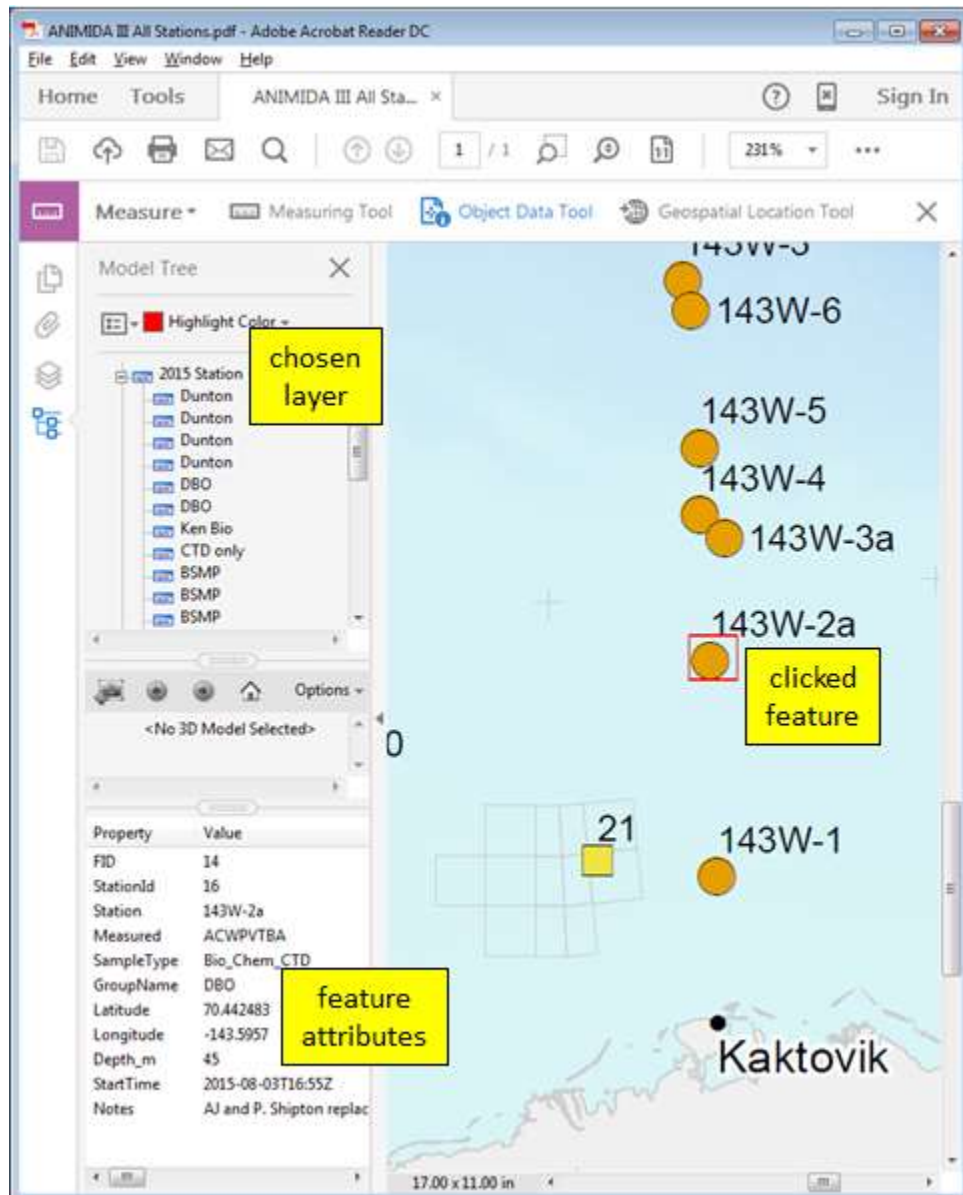


Figure 4: Result of Using the Object Data Tool